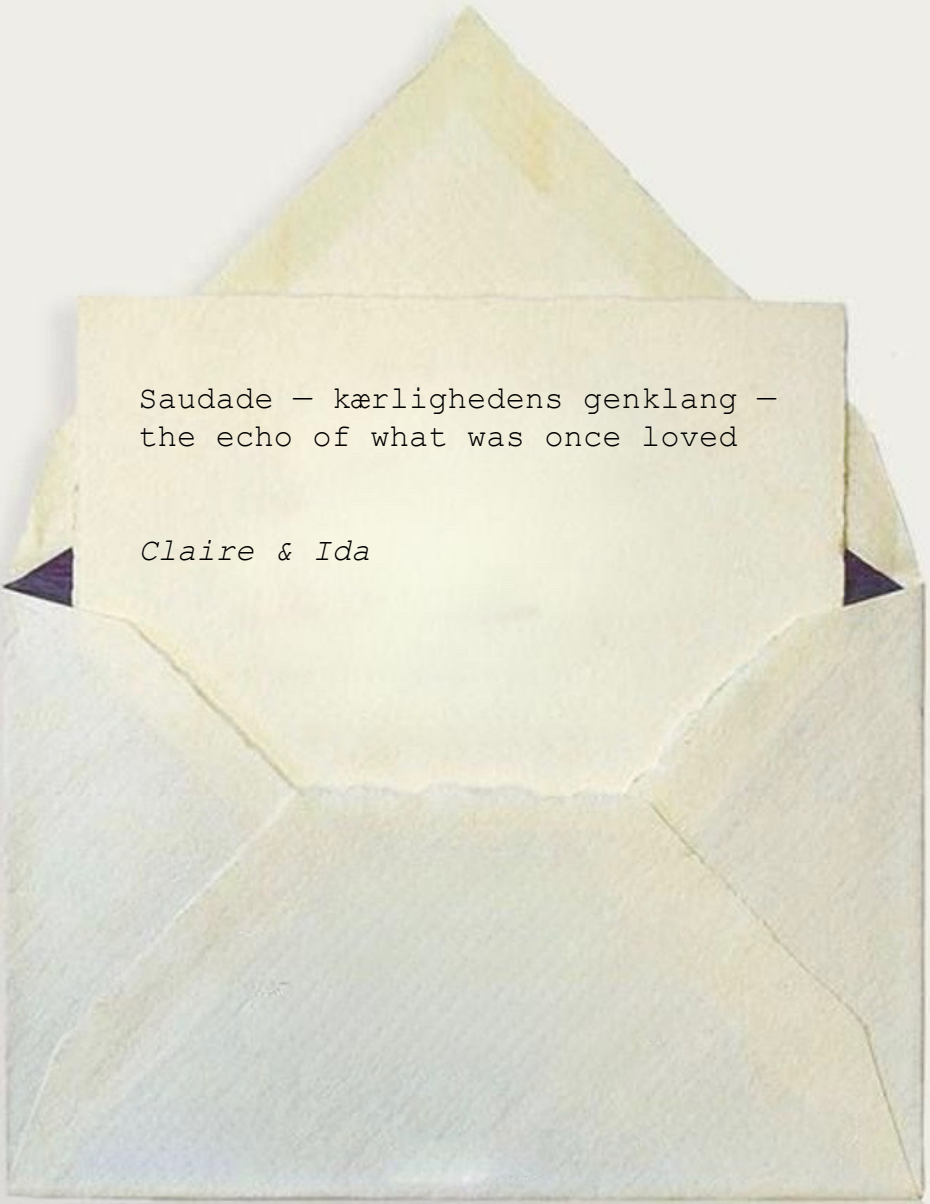


H.C. ANDERSEN FESTIVAL 2026
EXHIBITION · 13-22 AUGUST, ODENSE C

SAUDADE

DANCE FILM, INSTALLATION & PAINTINGS
COLLABORATION BETWEEN CLAIRE FOODY AND IDA BRIEGHEL



Saudade – kærlighedens genklang –
the echo of what was once loved

Claire & Ida

Saudade is a Portuguese term, common in Brazilian culture, describing a longing tied to love rather than loss.

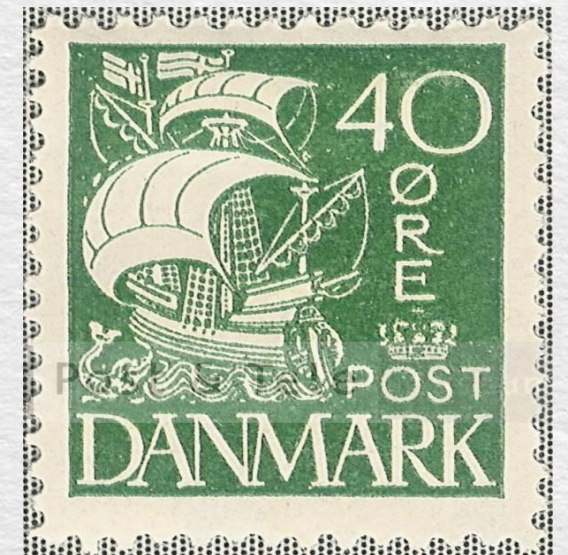
It is not absence alone, but a missing that keeps memory alive in the body. *Saudade* finds itself in the fairy tails of H.C Anderson as well as his personal journey. This exhibition translates that condition through film, paintings, soundscape, and spatial installation.

Developed by two artists living away from home, the work reflects a shared state of departure – but speaks to anyone who has held onto someone or somewhere that remains present, even in their absence. Community, diversity across borders, and the magic of technology are explored through the lens of *Saudade*.

COLLABORATION & CONTEXT

Saudade is a collaboration by Claire Foody (Canada) and Ida Brieghel (Denmark) – working respectively in film/installation and paintings. The artists met through KOMA Ballet in Odense, a company shaped by international movement under Brazilian artistic direction.

Neither artist began here, yet Odense became a point of convergence through sustained practice in the city. The exhibition also features contributions from dancer Emily Borghall (Odense) and composer Emil Mark (Copenhagen), grounding the work in the shared environment from which it emerged.



“*Wish you were here*”

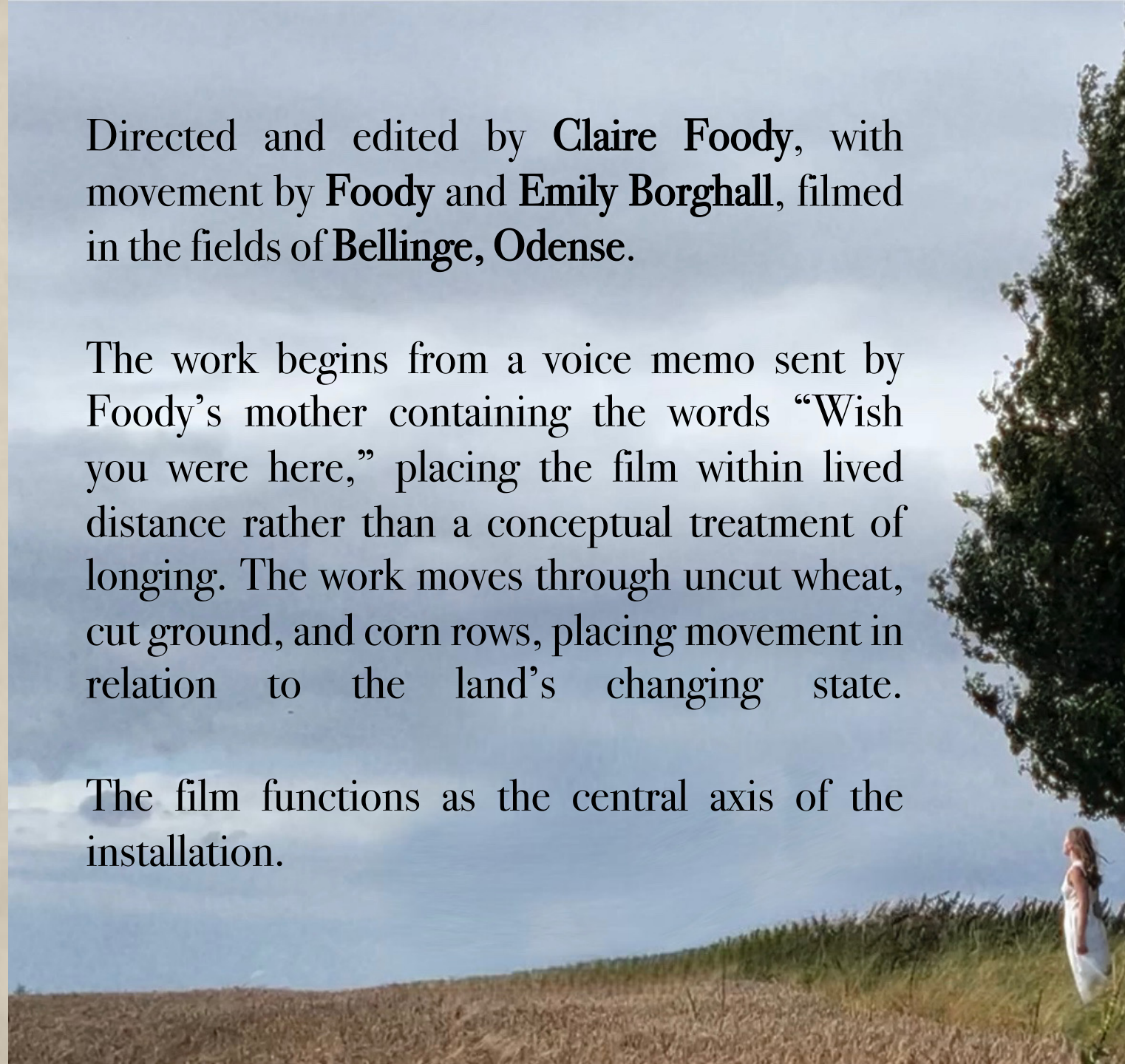
DANCE FILM



Directed and edited by Claire Foody, with movement by Foody and Emily Borghall, filmed in the fields of Bellinge, Odense.

The work begins from a voice memo sent by Foody’s mother containing the words “Wish you were here,” placing the film within lived distance rather than a conceptual treatment of longing. The work moves through uncut wheat, cut ground, and corn rows, placing movement in relation to the land’s changing state.

The film functions as the central axis of the installation.



DOMESTIC STRUCTURES



The installation is structured around domestic points: a sofa, a dining table, a wardrobe, a chandelier, and curtains.

Each second-hand element is altered by materials drawn from the film – hay formed into a rug, a light recalling a corn stalk, fabric from the performers' dresses reworked into upholstery and table surface. These objects do not recreate a home but suggest one affected by distance. Longing appears not as narrative but as a material shift – a home subtly altered by what is missing.

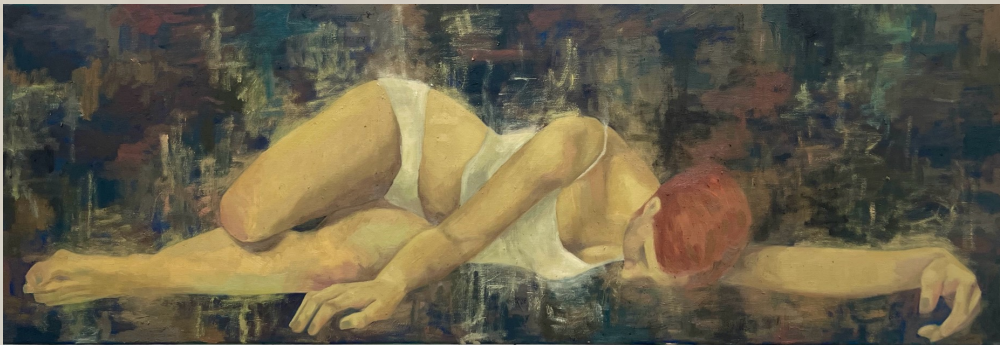
Screens are embedded within these structures: inside the wardrobe, within the table, and across surfaces, playing fragments of the film. The projection remains visible from all points, operating as the fixed axis around which domestic space is reconfigured.

PAINTINGS

The paintings by Ida Brieghel exist in two registers: some respond directly to scenes from the film, while others hold the emotional condition of *Saudade* more abstractly through palette and gesture.

Rather than illustrating sequence, the works function as material intervals – surfaces where movement has settled into stillness. Dusty rose tones, muted greens, hay yellow, and faded blue echo both the landscape of the film and the textures of longing embedded in domestic space.

Placed in dialogue with the installation structures, the paintings act as points of pause within a work defined by loop, return, and continuation.



A DUAL SOUNDSCAPE

The sound unfolds in two layers. At ten-minute intervals, the space shifts to a commissioned score by **Emil Mark**, composed for the film *Wish You Were Here* and adapted for this installation. The composition introduces a formal rhythm that anchors the work in time.

Between these intervals, a continuous soundscape of voice memos fills the space. Gathered from artists living away from home and their wider circles, the recordings were exchanged between loved ones across more than seven languages – including English, French, Spanish, Danish, Norwegian, Swedish, Italian, and Portuguese.

The memos do not align directly with the film but linger as an ambient presence, dispersed through the installation. Together, these two layers form a cycle of intimacy and structure – a conversation between memory and composition.



SPATIAL LAYOUT

The installation opens directly onto the projection. Domestic elements – sofa, wardrobe, dining table, chandelier, and curtains – are placed as visual anchors rather than room divisions. Each contains an embedded screen and painting, creating multiple points of return beyond the main projection.

The layout is non-linear, allowing the viewer to encounter fragments from different angles rather than in sequence. Shared material tones across film, objects, and paintings form a visual continuity through the space.

Because of these elements, the exhibition requires an inside venue and power, yet can easily mold to different locations.



PRESENCE & PARTICIPATION

The installation is designed for lingering rather than passing.

Visitors are invited to sit, open the wardrobe, and move between film fragments at their own pace. Interaction is optional and unannounced – the work is meant to be encountered through presence rather than instruction.

Saudade is a universal condition, resonating across generations – from children and families to the elderly. Rooted in influences from Brazil, Canada, and Denmark, the exhibition becomes a site for dialogue between cultures and memories.



OUR TEAM & SUPPORTERS

Saudade is a multimedia production bringing together artists and institutions across disciplines.

Co-creators

Claire Foody – Dance Film & Installation (Canada)

Ida Brieghel – Paintings (Denmark)

Collaborators

Emil Mark – Composer (Denmark)

Emily Borghall – Performing Artist (Denmark)

Carol Rodriguez – Artistic Consultant (Brazil)

Fredrik August Madsen-Malmo – Technical Support & Photography (Norway)

With visibility from

KOMA Ballet

Det Kongelige Balletskole Odense

Funen Art Academy

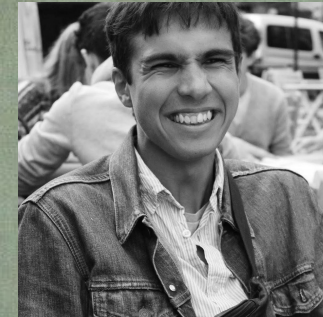
Syddansk Musik Konservatorium



Claire Foody



Ida Brieghel



Emil Mark



Emily Borghall



Carol Rodriguez



Fredrik Malmo

MAN KAN GODT SAVNE OG HØRE TIL PÅ SAMME TID

SAUDDADE

ONE CAN MISS, AND STILL BELONG